



# GRIFFIN CROSSROADS

## Opening Spring 2003!

### Phase II



Shops D

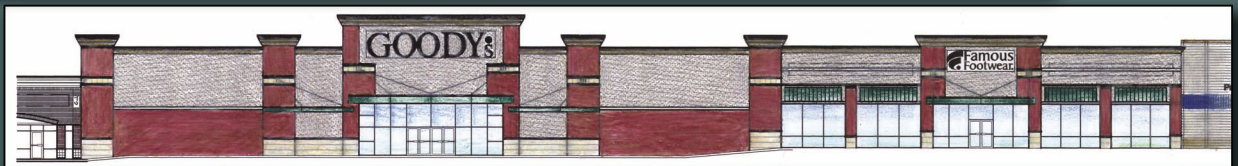
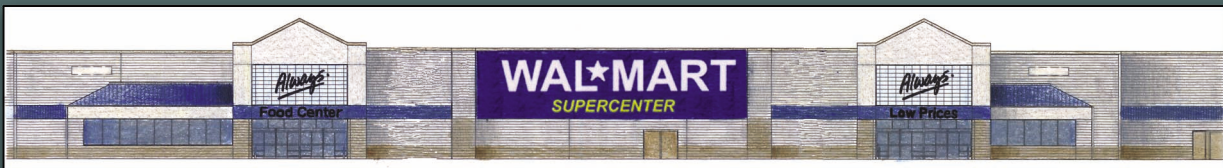
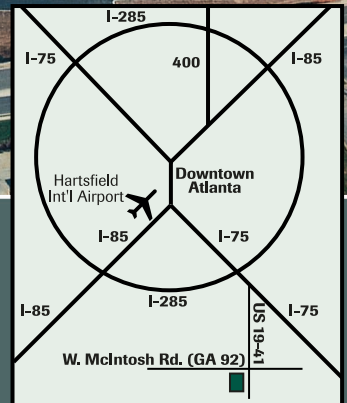


Shops A

- Under construction, small shop space including an endcap restaurant location with covered patio
- Pre-Leasing Phase II Anchor Spaces – 16,000 - 100,000 SF

### Property Highlights

GLA:	475,000 SF
Traffic Count (cars per day):	58,650
Trade Area HH Income:	\$44,560
Trade Area Population:	90,851



owned and managed by:



Contact:

Dan Gagne, CSM or Steve West, CSM 800.864.2221

5269 Buford Highway ■ Atlanta, Georgia ■ 30340  
v. 770.451.0318 ■ f. 770.454.8828 ■ halpern-online.com